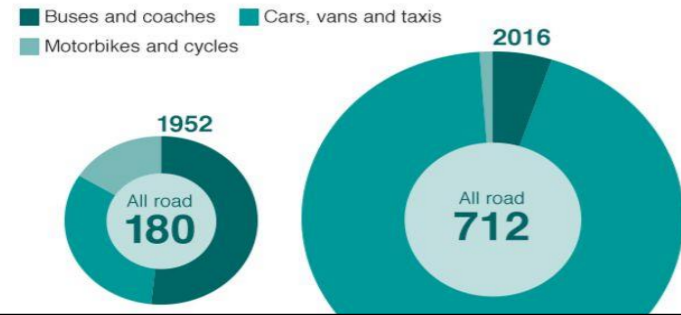
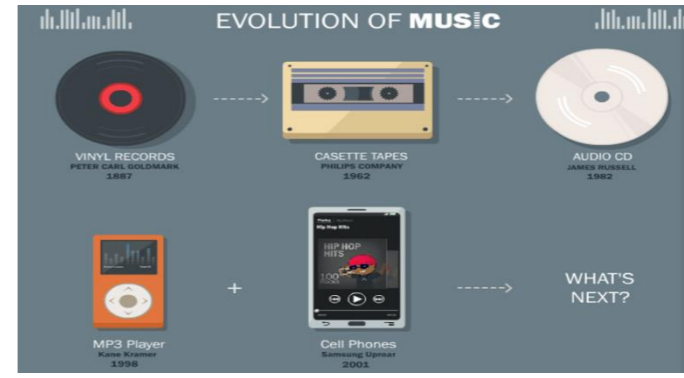
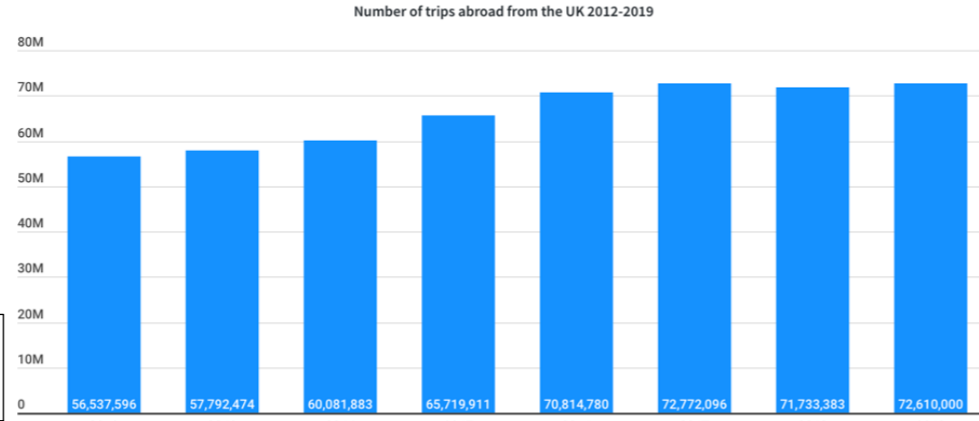


Changes Leading to a Modern Britain - fact sheet

Road travel in billions of passenger km per year



There has been a substantial increase in the use of cars since the 1950's.



Banksy uses different print techniques to the more traditional printing style and processes of William Morris.

- Spain** 15.62 million
- France** 8.56 million
- Italy** 4.16 million
- USA** 3.47 million
- Republic of Ireland** 3.42 million
- Portugal** 2.87 million
- Germany** 2.82 million

UK's top holiday destinations in 2019.

The introduction of motorways in the 1950's and 60's made travel much easier and quicker between places.



Fiona Rae is a modern British artist.

Migration to Britain through time

- Romans**
We came from all over the Roman Empire after we invaded Britain in 43 AD.
- Saxons (5th century to 1066)**
Some of us came to support Britain in World War II (1939-45) and others came from the late 1940s onwards for work.
- Vikings (789-1066)**
We came as invaders and settlers from Norway, Denmark and Sweden and settled in parts of Britain and Ireland.
- Normans (1066)**
We came as invaders from Normandy in 1066 and our leader became King of England.
- Flemish weavers (1200-1400)**
We came from Flanders (modern Belgium). We were invited here because of our weaving skills.
- Africans**
Some of us came over as Roman soldiers and settlers after AD 43.
- Jews**
We came from eastern Europe because we were attacked for our religion in the late nineteenth and twentieth centuries.
- People from China**
We first came from Chinese ports in the early nineteenth century as seamen and found work here.
- Irish people in the mid-nineteenth century**
We came to escape from famine/hunger in 1845-49.
- African Caribbean**
Some of us came to support Britain in World War II (1939-45) and others came from the late 1940s onwards for work.
- Other Commonwealth migrants**
There are many of us, including Australians, who have come here to work, especially in the second half of the twentieth century.
- East African Asians**
We came here when we were forced out of our countries - in Kenya in 1968 and Uganda in 1972.
- People from the Indian subcontinent**
We came from the Indian subcontinent from the 1950s onwards for work.
- People from Poland and eastern Europe**
Some of us came when our countries were invaded during and after World War II (1939-45). Others of us came here in the twenty-first century for work.
- Africans in the seventeenth and eighteenth century**
Many of us were brought here as servants and slaves.

What other groups of people have come to Britain?

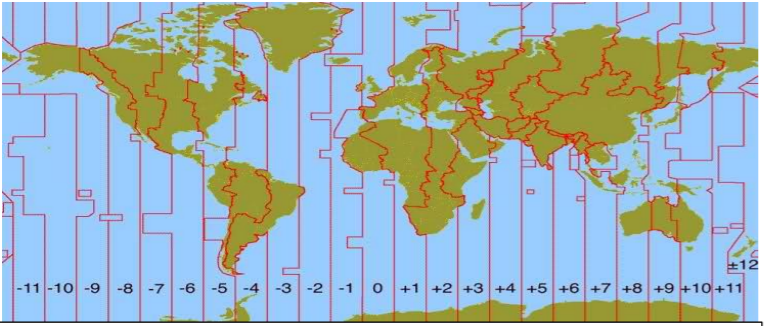
www.history.org.uk



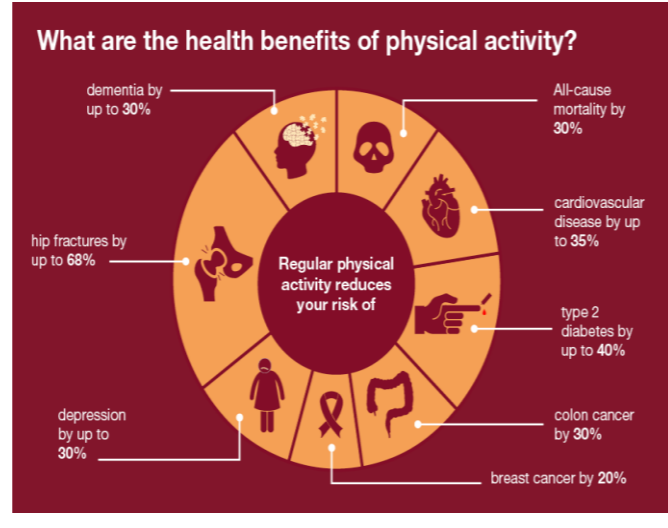
Windrush Day takes place on 22 June, remembering the day when around 500 migrants from the Caribbean arrived in 1948. Britain was just starting to recover from World War Two back then. Thousands of buildings had been bombed, lots of houses had been destroyed and it all needed to be rebuilt.

In the Caribbean, lots of young men and women had served in the British armed forces because at the time, many Caribbean countries were still under British rule and not yet independent.

After the war, some of these people answered an advert to come to Britain where there were lots of different jobs to do.



The Greenwich Meridian separates east from west in the same way that the Equator separates north from south. Inextricably linked with Greenwich Mean Time, it also sits at the centre of our system of time zones.



Brexit is the withdrawal of the United Kingdom from the European Union. Following a UK-wide referendum in June 2016, in which 52% voted to leave and 48% voted to remain in the EU.



Gaming is a popular, modern, leisure time activity. It is important to be safe online.



Sport has become much more inclusive with more people given the opportunity to participate.